

LLNS Organization and Annual Costs

EXECUTIVE COMMITTEE

Norman Pattiz

Chairman; Regent, University of California; Founder, Westwood One, Inc.; Founder and Chief Executive Officer, Courtside Entertainment Group; Chief Executive Officer, PodcastOne and PodCastOne Sales

Craig Albert

Vice Chairman; President, Bechtel Systems and Infrastructure, Inc.

William Frazer

Senior Vice President Emeritus, University of California; Chair of the Science and Technology Committee

Glenn Mara

Vice President for Laboratory Management, University of California; Chair of the Nominations and Compensation Committee

David Pethick

General Manager, Global Management and Operations Services, URS Corporation

Craig Weaver

Managing Director, Bechtel Management Company Limited

INDEPENDENT GOVERNORS

Steve Koonin

Director of New York University's Center for Urban Science and Progress; Chair of the Mission Committee

Richard Mies

Admiral (Retired), U.S. Navy; Former Commander, U.S. Strategic Command

Donald Kintzer

Partner (Retired), PricewaterhouseCoopers, LLP; Chair of the Ethics and Audit Committee

Ellen Tauscher

Strategic Advisor for Baker, Donelson, Bearman, Caldwell & Berkowitz, PC; Former Member of U.S. House of Representatives, California 10th Congressional District; Former Under Secretary of State for Arms Control and International Security; Former Special Envoy for Strategic Stability and Missile Defense

ADVISORY MEMBERS

Steven Beckwith

Vice President for Research and Graduate Studies, University of California

John Howanitz

General Manager of Nuclear Security and Allied Governments, Bechtel National, Inc.

Bruce Varner

Regent, University of California; Partner, Varner & Brandt, LLP

Jeffrey Wadsworth

President and Chief Executive Officer, Battelle Memorial Institute

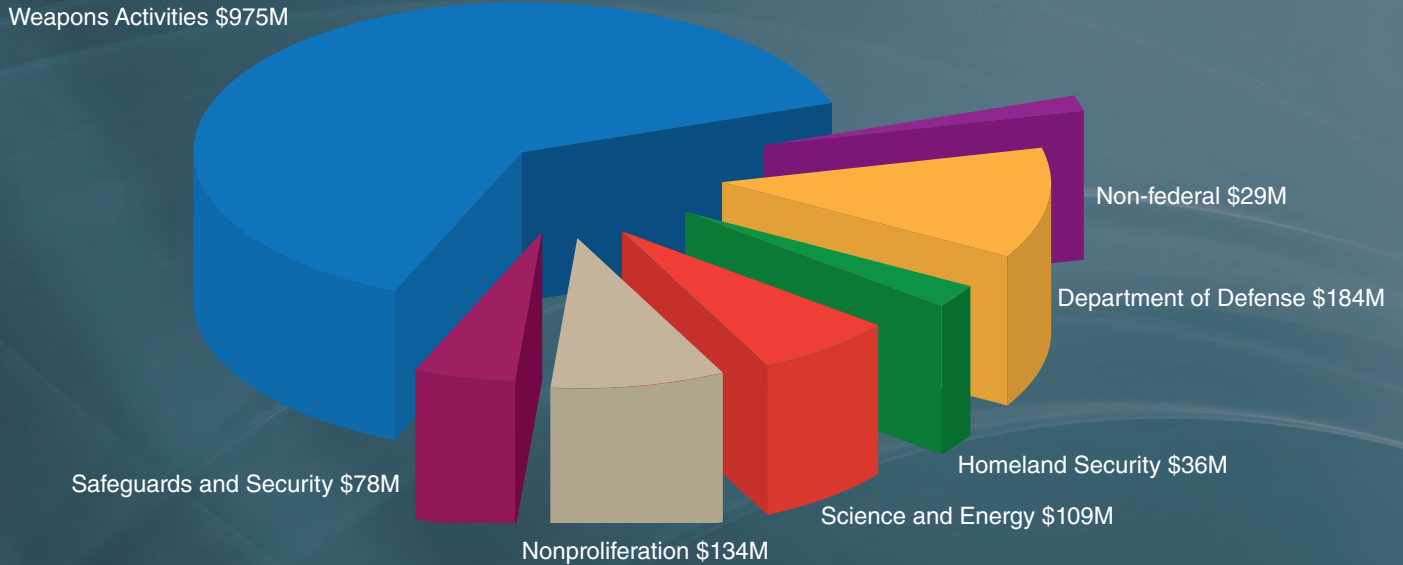
David Walker

Manager of Special Projects and Senior Advisor, Bechtel National, Inc.; Chair of the Business, Operations, and Security Committee

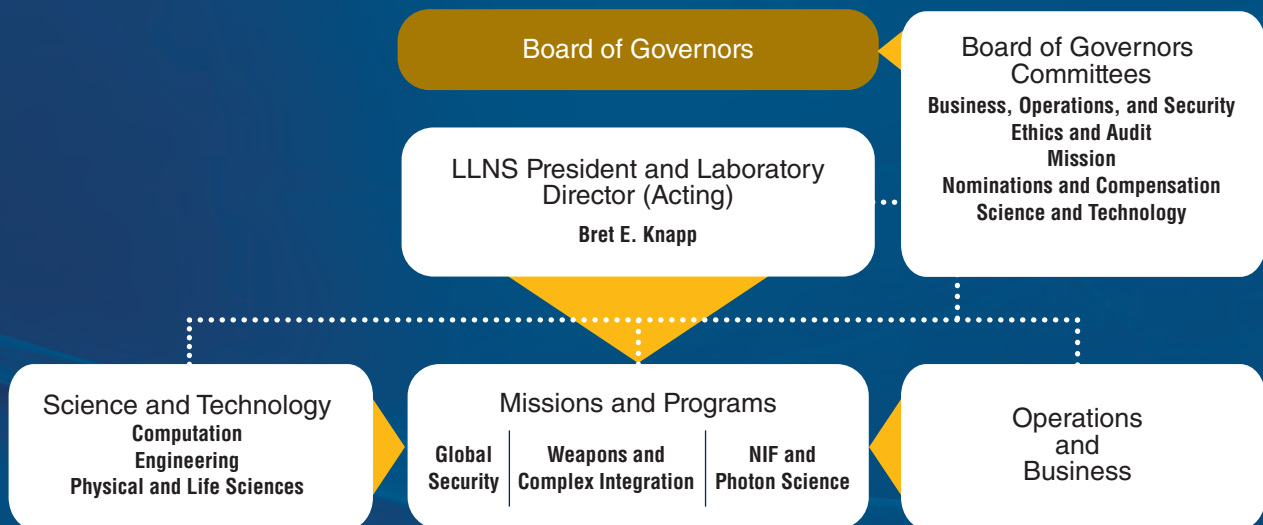
LLNS Board of Governors Chairman Norman Pattiz (right) and Vice Chairman Craig Albert (left) join acting Laboratory Director Bret Knapp at a joint meeting of the LLNS and Los Alamos National Security, LLC (LANS), boards. The two boards work to better integrate activities and make both laboratories and the NNSA enterprise more effective and efficient.



LLNL FY2013 Actual Costs: \$1.55 billion



Lawrence Livermore National Security



LLNS is a limited liability company managed by members Bechtel National, Inc., University of California, BWX Technologies, Inc., and URS Energy & Construction, Inc. Battelle Memorial Institute also participates in LLNS as a teaming subcontractor. Cutting-edge science is enhanced through the expertise of the University of California and its ten campuses and LLNS' affiliation with the Texas A&M University system.